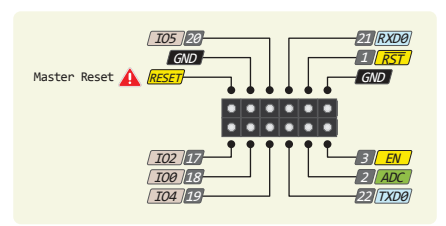
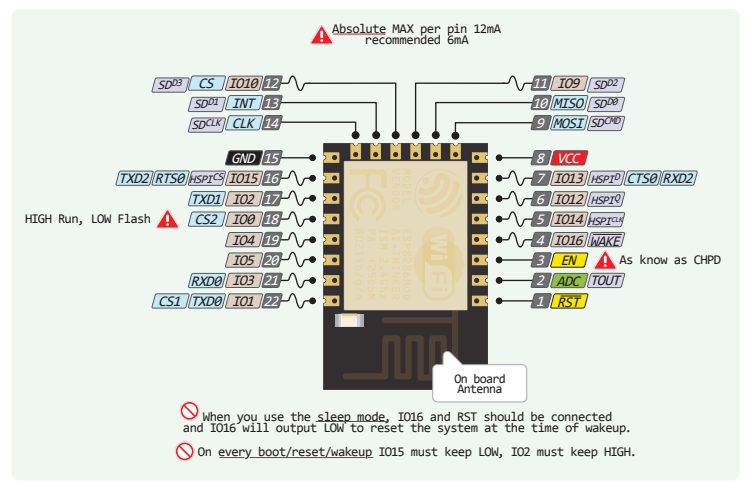


- Arduino IDE
- Power
- GND
- Serial Pin
- Analog Pin
- Control
- INT
- Physical Pin
- Port Pin
- Pin function
- Interrupt Pin
- ~ PWM Pin
- ● Port Power ⚠

⚠ The power sum for each pin's group should not exceed 100mA

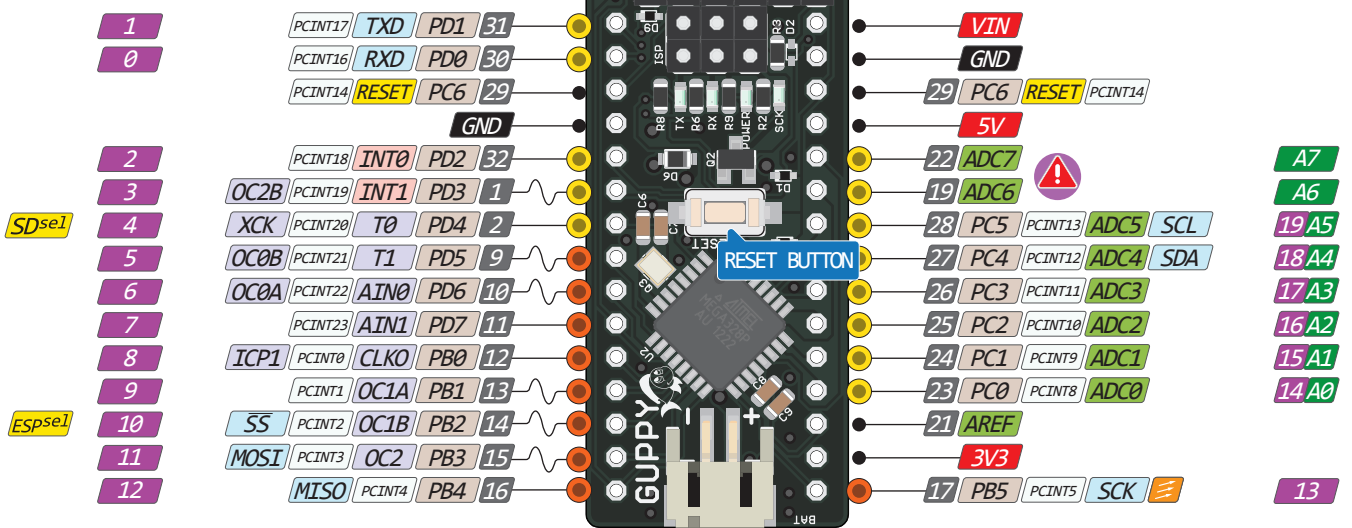


⚠ Absolute MAX per pin 20mA recommended 10mA

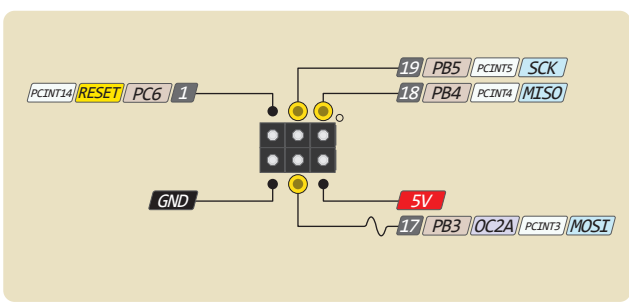
⚠ Absolute MAX 200mA for entire package

3V3 The output from 3.3V Regulator Absolute MAX 800mA

VIN The input voltage to the board when it is running from external power. Not USB bus power.



⚠ Analog exclusively Pins



Optional Lipoly Battery